

SYRIA EDUCATION PROGRAMME II – MANAHEL



**BUILDING
HOPE
FOR FUTURE
GENERATIONS**
MANAHEL



SYRIA
EDUCATION
PROGRAMME





Locally known as Manahel - meaning fountains of hope, knowledge, and life - the Syria Education Programme is a four-year programme funded by UK aid and implemented by Chemonics. It is designed to provide education to primary school-aged children in conflict-affected areas of Northwest (NW) Syria.

Now in its second phase (2023-2027), Manahel will focus on strengthening the education system to increase the safety, inclusivity and quality of education for children across NW Syria. It will ensure that children are safe and supported in school, learning better and for longer, and reading by the end of primary education.

Manahel understands that, for children to learn, schools and teachers need a comprehensive package of support which includes pedagogical supervision, learning assessments, psychosocial support, and safeguarding for children. It also knows that building hope for future generations in NW Syria requires dedicated investment in capacity and models that support children to learn, and the commitment of local and international partners to support and scale up proven best practices.

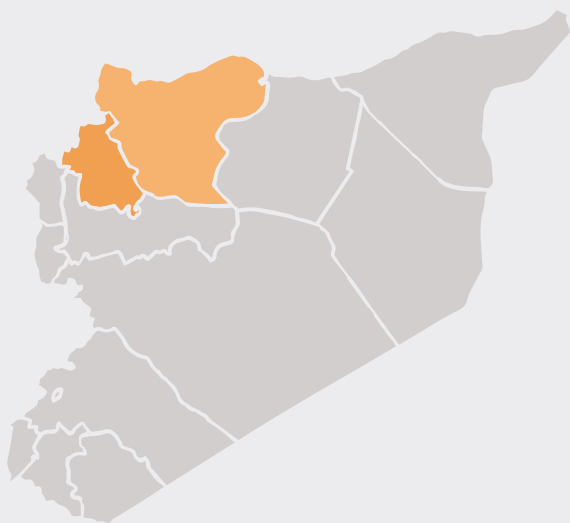
What has Manahel achieved so far?

In its first phase (2018 - 2022), Manahel was designed to ensure schools could remain open and that children were safe and supported to learn.



600,000

children benefitted through school, home and after-school education.



2,514

school staff trained on inclusive and gender responsive pedagogy.



More than 50%

of primary schools have implemented educational and safeguarding practices.



Education staff stipends

for over 16,000 school staff through a secure payment system ensured schools can remain open.



50% of Manahel's students

entering Grades 3 and 4 advanced into the top two categories of proficient and progressing readers.



Capacity building

so Education Directorates (EDs) could provide support and coaching to schools.

3,591



children referred using Child Protection mechanisms.



35,406

students supported by Manahel in the Summer Club (annually).



Special Education Centres doubled

from 17 to 34, catering to 182 children (51% girls).



34 special education teachers

trained to provide support to children with special needs.

392

students with severe disability provided with special education support.



MANAHEL

2023 to 2027



Maintaining access to education

Keeping schools open and operating remains a key priority for Manahel. In the next phase of the programme, Manahel will continue to provide salaries to school staff through secure payment systems. Alongside local partners and Education Directorates (ED) in Idlib and Aleppo, Manahel will prioritise fund distribution based on identified need, addressing educational challenges and the trauma faced by children due to shelling, airstrikes and earthquakes. In response to discussions with EDs, Manahel will seek to include additional schools to receive comprehensive packages of support. Manahel will support EDs to map the support provided to formal education in the region and support collaboration between EDs and local NGOs so that more children can be reached. In doing so, Manahel hopes to increase the resilience and efficiency of the education system.

4,500 teachers and other school staff will receive their salary payment in the first semester (Oct 2023 – May 2024), ensuring schools across NW Syria can remain open and deliver learning.

Improving learning outcomes

Manahel will continue to support children, especially girls, through the next phase of the programme with interventions to create conducive learning environments. These will include the provision of teaching and learning materials, school support and equipment so school leaders and teachers can ensure children are learning and improving. Manahel has developed specific milestones in terms of learning performance for students, ensuring they are on track to reach reading proficiency levels by the end of primary education. Through a comprehensive package, 240 primary schools in NW Syria will receive support from Manahel this year. This will include teacher and academic year stipends, a summer school for struggling learners, and assistance to enhance school safety and inclusivity.

121,065 students per academic year will be supported through a package of interventions.





Ensuring an inclusive approach

Manahel's approach prioritises inclusion, especially for girls and children with disabilities, and employs a Gender Equality, Disability, and Social Inclusion (GEDSI) lens so that all interventions enhance access and equity. Manahel will continue to support after-school clubs to address knowledge gaps, increase girls' confidence, and reduce the risk of dropout. This intervention has already resulted in increased regular attendance by girls and greater parental support for girls' education.

Manahel's special education interventions support children with psychosocial and other special needs to learn and improve their school performance, with teachers supported to include all children in classroom activities. The initial GEDSI analysis laid the foundation for an increased focus on education for girls and children with disabilities.

50% of all 122,640 students reached by Manahel in 2024 must be girls.

Support will be extended to create 50 Special Education Centres (SEC).

Enhancing professional capacity for education staff

Manahel is committed to improving the professional capacity of education staff. Monthly learning circles led by education instructors will provide essential support for teachers to reflect and improve their practice using assessment results. Targeted training for teachers will improve skills, inclusive methods and teaching practice. Deputy Headteachers will undergo pre- and post-competency assessments to gauge their understanding of education practices.

Manahel will update the supervision and coaching framework for teachers and education personnel, currently utilised by EDs to monitor teaching and learning through instructors, ensuring ongoing professional development in line with the Teacher Competency Framework (TCF).

Manahel will use supervision and coaching tools:

- Learning circles
- Individual supervision sessions
- Lesson observations
- Learning walks (short and informal lesson observation)
- Shadowing which enables teachers to see the classroom experience through the eyes of students.





Enhancing learning assessments

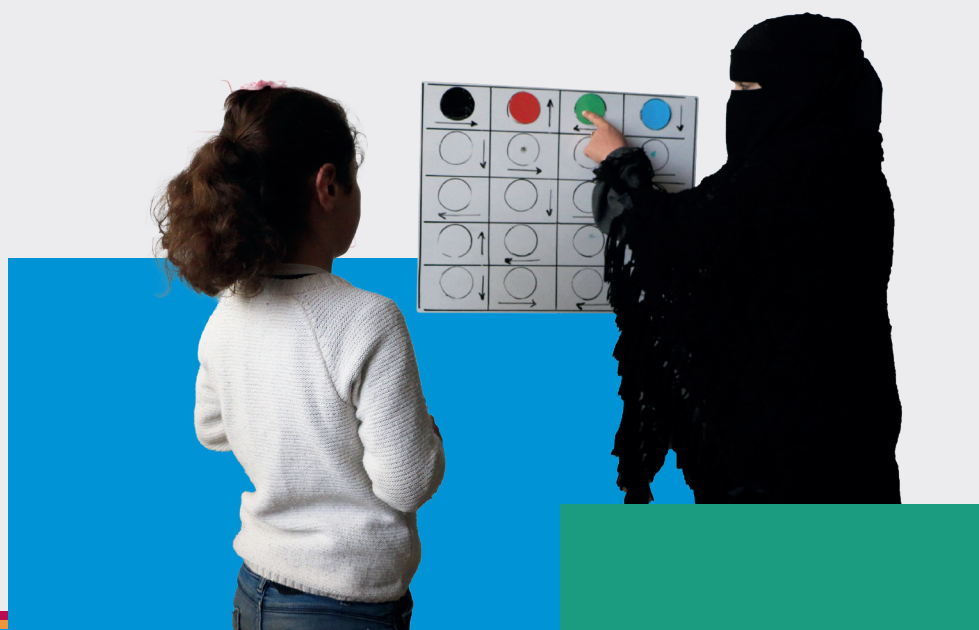
Learning assessments play a pivotal role in learning improvement. Building on successful assessment models for reading and Maths in the first phase of the programme, Manahel seeks to apply a Teacher-led Early Grade Learning Assessment (TEGLA) in the schools it supports. TEGLA empowers teachers themselves to conduct group and one-on-one assessments for swift and cost-effective feedback and data on learners' progress. Locally-driven, this method equips teachers and headteachers to comprehend student performance relative to peers and develop targeted action plans to address individual needs.

Manahel will train 90 instructors to lead the implementation of TEGLA in schools.

Creating safer learning environments for children

Child safeguarding and protection is essential for children to learn. In NW Syria, students struggle with depression, anxiety, stress and isolation as a result of the ongoing conflict. To address children's psychosocial and emotional needs, Manahel has delivered psychosocial support (PSS) sessions for all students, tailoring individual support for those requiring it. Interactive group sessions enhance students' well-being and boost self-confidence and purpose. In the next phase, safeguarding officers (SGOs) will continue referring students with severe functional barriers, who require specialised assistance beyond the school's capacity to available services through case management and established referral pathways. External referrals may include to mental health and psychosocial support workers/clinics or the provision of assistive devices.

235 existing and new SGOs will receive training on different types and signs of abuse, reporting mechanisms and safeguarding policy.





Assessing and mitigating risk

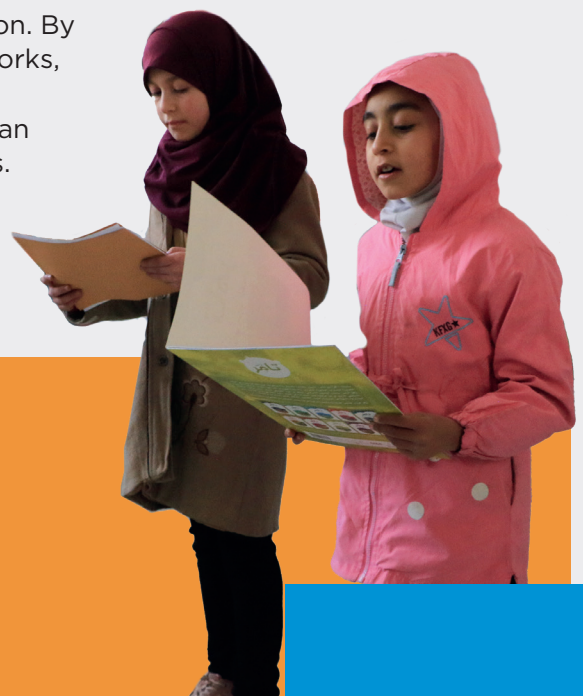
Manahel has established efficient and effective finance, risk and compliance systems. Operating in one of the world's most challenging environments, Manahel's multi-layered management and accountability process ensures robust reporting and financial oversight. A specialised risk team monitors dynamic conflict changes, ensuring safe operations and instilling confidence in donors.

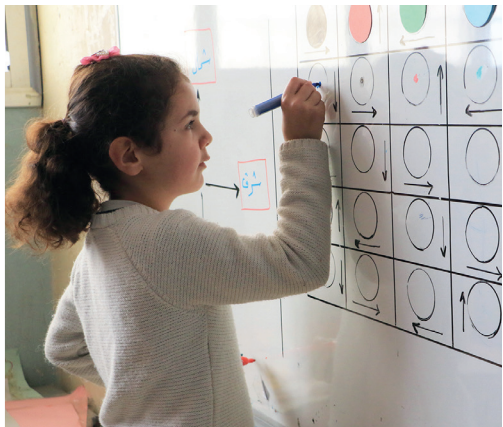
Manahel's updated risk management unit will continue to analyse and assess risk impacting programme implementation and the wider education sector. Collaboration with partners will enhance and extend risk reporting and management. The team will provide timely political and contextual analysis, technical guidance, training, and operational support to ensure the integration of risk mitigation measures across all programme interventions.

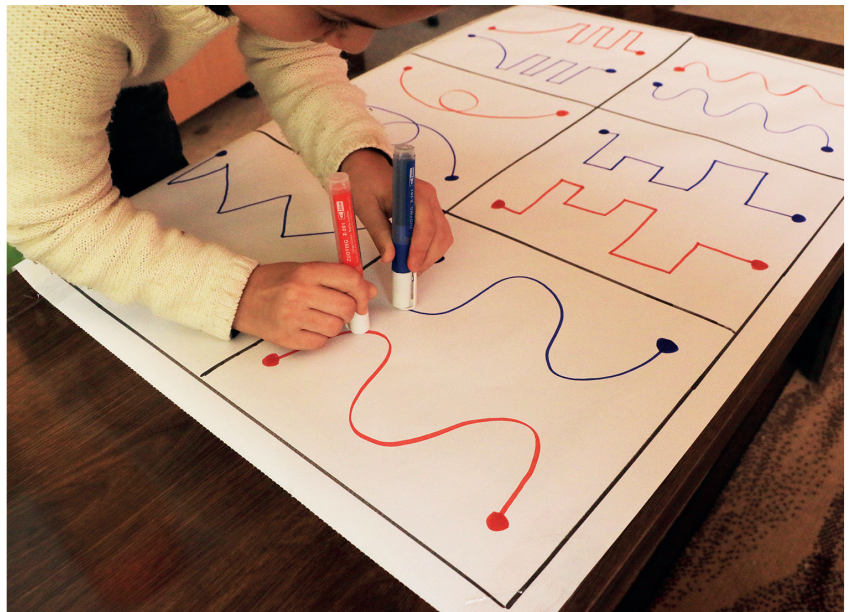
Manahel will follow a risk analysis and mitigation process which will be revisited and updated on a regular basis.

Building a resilient and strengthened education sector

Despite the challenges in the operating environment, Manahel understands that it is only through stronger systems that education can build lasting hope for future generations. Prioritising system strengthening and sustainability, Manahel is dedicated to fostering broader changes in the education sector through increased collaboration and support to EDs and closer relationships with local education actors. Coordination with NGOs and local entities ensures efficient resource utilisation for increased access to education. By seeking to integrate successful practices into policy frameworks, Manahel will support the long term continuity of effective educational methods. In doing so, Manahel aims to support an education system that can build hope for future generations.







PARTNERSHIPS FOR INCLUSIVE, QUALITY, LEARNING



**SYRIA
EDUCATION
PROGRAMME**



In partnership with

